

Windows System Instructions

1. Please go to [Tamkang SoftCloud website](#) and click “[Application](#)” to register the services. The service will be available when the notification has been received. (The process would take around 30 minutes).
2. Horizon Client Installation Steps (If you've already installed , please skip to step3)

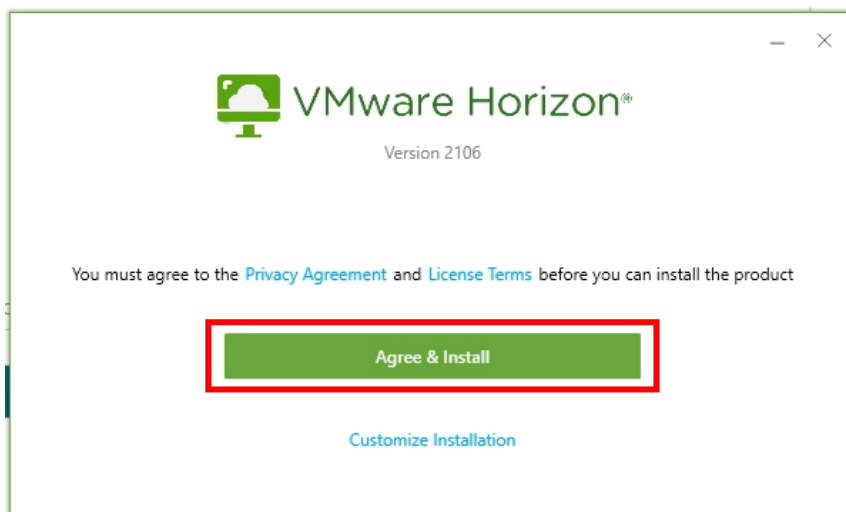
(1) Download link: [Omniessa Horizon Client for Windows](#)

(2) Go to the website and click “DOWNLOAD NOW”

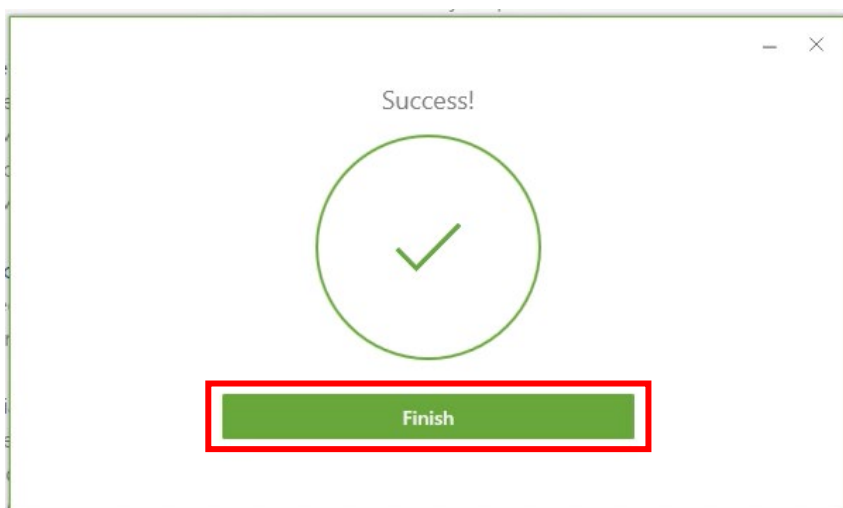
The screenshot shows the VMware Customer Connect website. The header includes the VMware logo and navigation links: Products and Accounts, Knowledge, More, Register, and Login. The main content area is titled "Download Product" and displays details for the VMware Horizon Client for Windows. The details include a "Select Version" dropdown set to 2106, a "Documentation" link to Release Notes, a "Release Date" of 2021-07-15, and a "Type" of Product Binaries. A sidebar on the right lists "Product Resources" including View My Download History, Product Info, Documentation, Horizon Mobile Client Privacy, and Horizon Community. Below the main content area, there are tabs for Product Downloads, Drivers & Tools, Open Source, Custom ISOs, and OEM Addons. The "Product Downloads" tab is active, showing a table with columns for File and Information. The table lists the VMware Horizon Client for Windows with a file size of 299.35 MB and a file type of exe. A red box highlights the "DOWNLOAD NOW" button in the bottom right corner of the table row.

| File | Information |
|-----------------------------------|------------------------------|
| VMware Horizon Client for Windows | DOWNLOAD NOW |

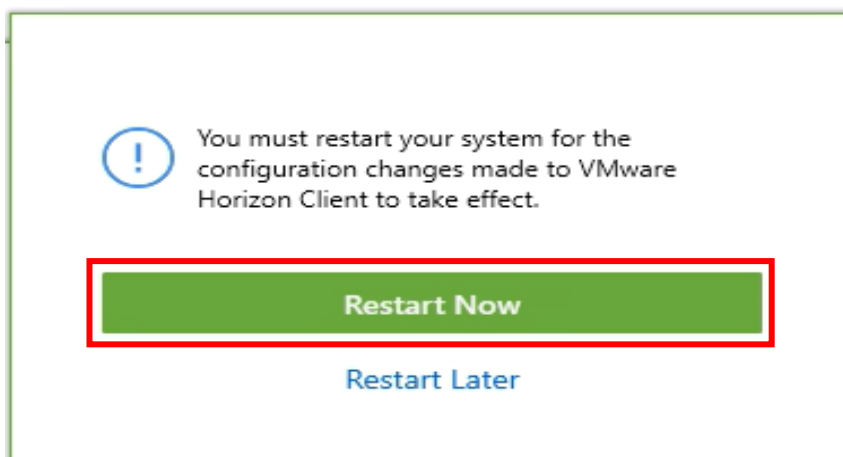
(3) Click “Agree & Install”



(4) Click “Finish”



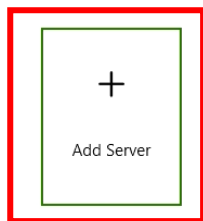
(5) Click “Restart Now”



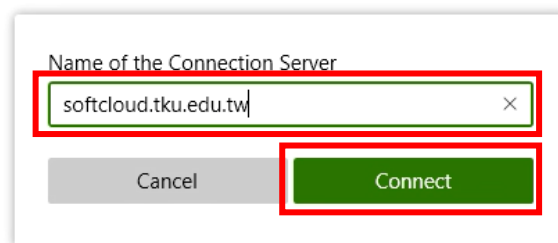
3. Connect to Tamkang SoftCloud

(1) Click the Horizon Client icon on the desktop.

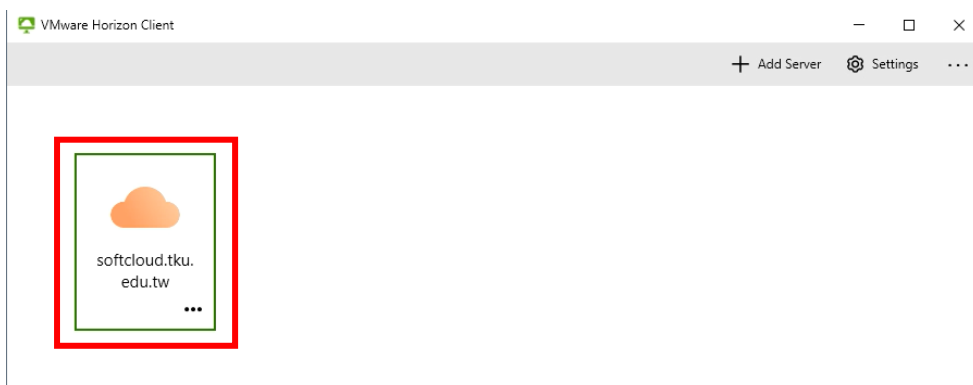
(2) Click “Add Server”



(3) Setting the server name as “softcloud.tku.edu.tw” and then click “Connect”

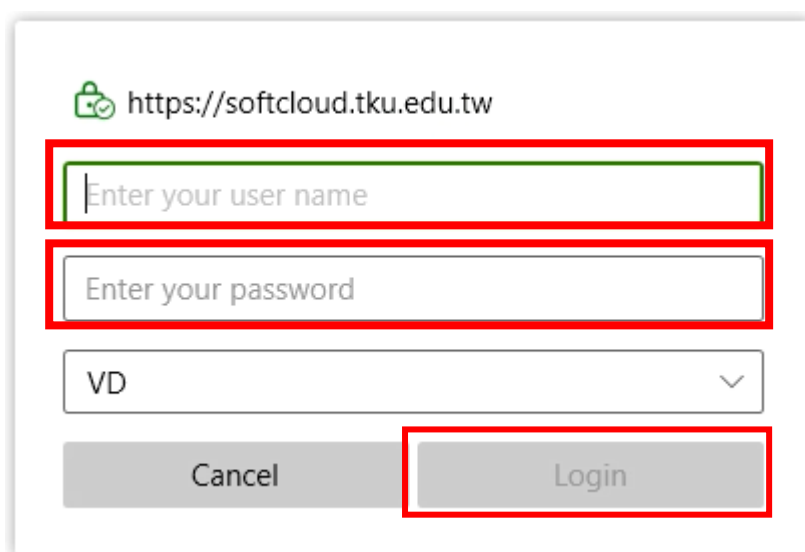


(4) If you have set it before, Please make sure the server name is correct and double-click to connect.



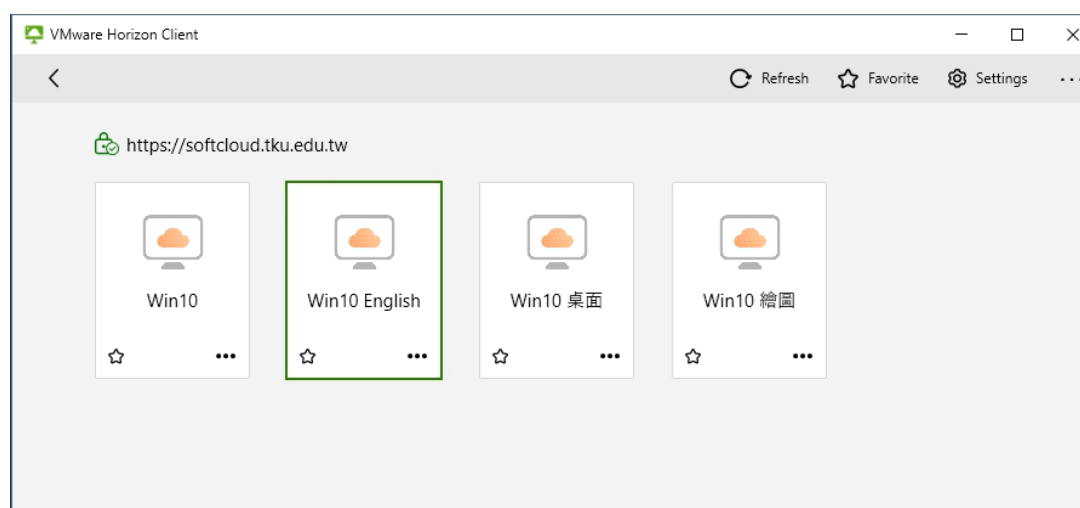
(5) Enter your user name and password to “login” :

The usernames of TKU students and faculty are “Student ID” and “Employees Code ID” respectively. The password is single sign-on (If you didn't change your password before, login with the last 6 digits of your ID.)



The image shows a login form for the URL <https://softcloud.tku.edu.tw>. The form includes a text input field for the username, a password input field, a dropdown menu currently set to 'VD', and two buttons: 'Cancel' and 'Login'. The username and password fields, and the 'Login' button, are highlighted with red rectangular boxes.

(6) Double-click the icon to connect.



4. If you want to log out of the TKU software cloud, please select “Disconnect” in the “...” drop-down menu above.

